



# Annadale

MICKLEHAM

**House & Land Package \$634,100**

Bedroom **4** Bathroom **2** Garage **2**



## Barcelona 23

Lot 2034 - Annadale

Land Size: 492m<sup>2</sup>

Frontage: 21.82m

**boutique**  
homes

[annadale.com.au](http://annadale.com.au)  
Phone 9825 4474

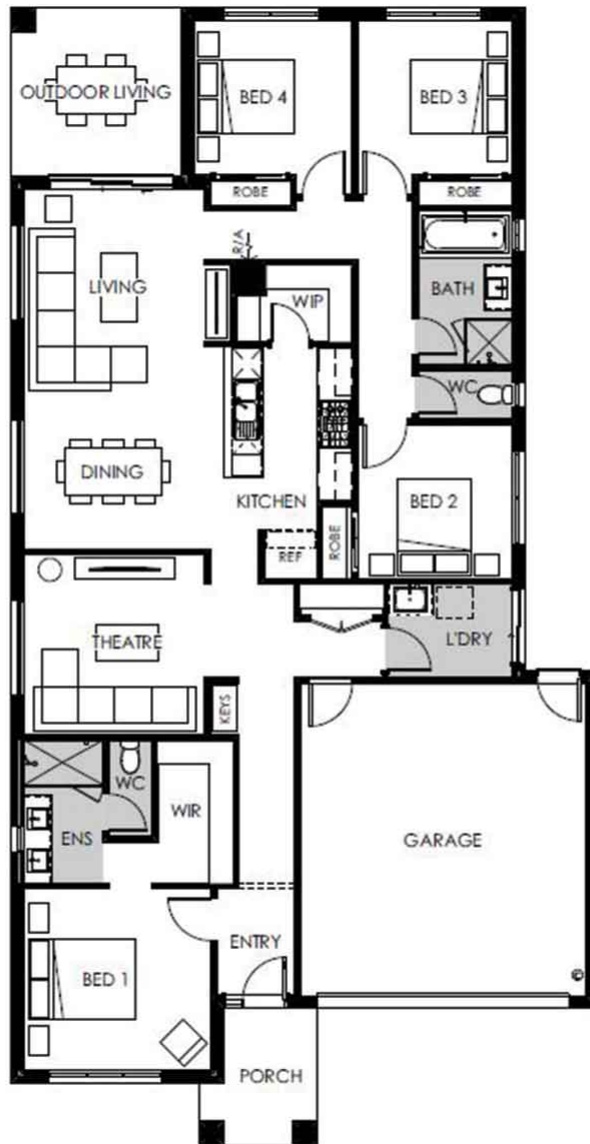
Contact our Sales Team:  
0467 999 962

DEVELOPED BY

 **MOREMAC**  
PROPERTY GROUP

# Annadale

MICKLEHAM



## INCLUSIONS:

- 100% Fixed site cost
- Stunning facade included
- Quality floor coverings throughout
- 2550mm high ceilings (to ground floor)
- ILVE 900mm wide oven, cooktop & rangehood
- 40mm Caesarstone kitchen benchtops
- Overhead cupboards adjacent to rangehood

boutique  
homes

annadale.com.au  
Phone 9825 4474

Contact our Sales Team:  
0467 999 962

DEVELOPED BY

 MOREMAC  
PROPERTY GROUP

WHILE BEST ENDEAVOURS HAVE BEEN USED TO PROVIDE INFORMATION IN THIS PUBLICATION THAT IS TRUE AND ACCURATE, ANNADALE, ITS CONSULTANTS, AGENTS AND RELATED ENTITIES ACCEPT NO RESPONSIBILITY AND DISCLAIM ALL LIABILITY IN RESPECT TO ANY ERRORS OR INACCURACIES IT MAY CONTAIN. PROSPECTIVE PURCHASERS SHOULD MAKE THEIR OWN ENQUIRIES TO VERIFY THE INFORMATION CONTAINED HEREIN.