



# Annadale

MICKLEHAM

**House & Land Package \$620,000**

Bedroom **4** Bathroom **2** Garage **2**



## Mandurah 34

Lot 2001 - Annadale

Land Size: 506m<sup>2</sup>

Frontage: 21.53m



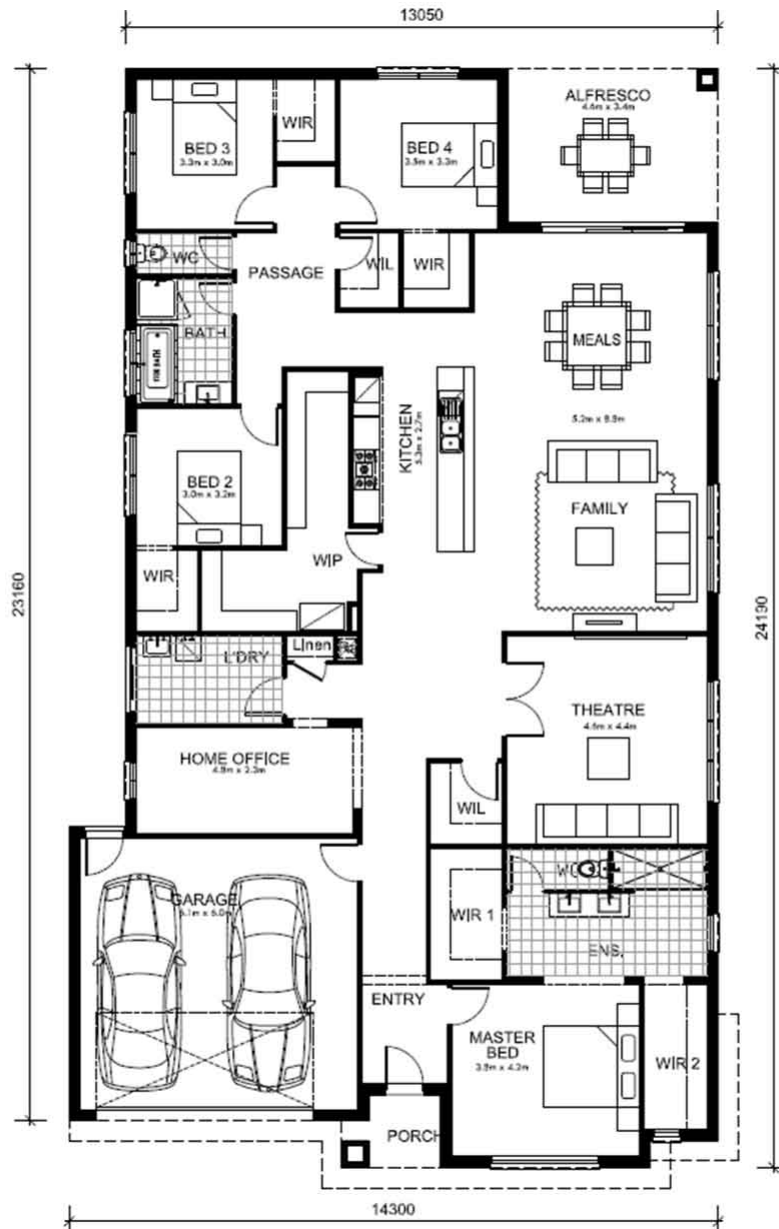
[annadale.com.au](http://annadale.com.au)  
Phone 9825 4474

Contact our Sales Team:  
0467 999 962

DEVELOPED BY  
 MOREMAC  
PROPERTY GROUP

# Annadale

MICKLEHAM



## INCLUSIONS:

- Mimosa Homes Added Value Includes:
- Inclusive of site costs & connections with H1 class slab as per standard inclusions!
- Quality floor coverings throughout home!
- Range of facades including feature render!
- 3 Coat paint system!
- Higher ceilings - 2550mm!
- Flyscreens & window locks!



## BUILDER CONTACT:

Edward Seychell 0467 999 962

[annadale.com.au](http://annadale.com.au)  
Phone 9825 4474

Contact our Sales Team:  
0467 999 962

DEVELOPED BY  
 MOREMAC  
PROPERTY GROUP

WHILE BEST ENDEAVOURS HAVE BEEN USED TO PROVIDE INFORMATION IN THIS PUBLICATION THAT IS TRUE AND ACCURATE, ANNADALE, ITS CONSULTANTS, AGENTS AND RELATED ENTITIES ACCEPT NO RESPONSIBILITY AND DISCLAIM ALL LIABILITY IN RESPECT TO ANY ERRORS OR INACCURACIES IT MAY CONTAIN. PROSPECTIVE PURCHASERS SHOULD MAKE THEIR OWN ENQUIRIES TO VERIFY THE INFORMATION CONTAINED HEREIN.