



Annadale

MICKLEHAM

House & Land Package \$653,188

Bedroom **4** Bathroom **2** Garage **2**



Tahlee 285

Lot 2040 - Annadale

Land Size: 667m²

Frontage: 11.1m



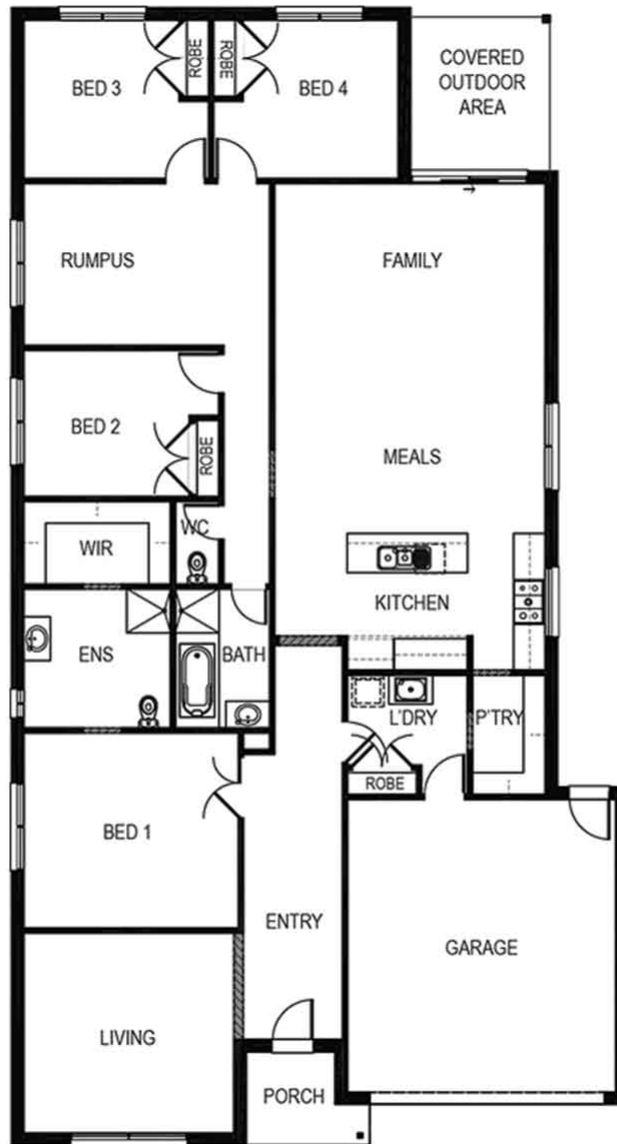
annadale.com.au
Phone 9825 4474

Contact our Sales Team:
0467 999 962

DEVELOPED BY
 MOREMAC
PROPERTY GROUP

Annadale

MICKLEHAM



INCLUSIONS:

- Fixed Site Costs
- Developers Guidelines
- Colorbond Roof
- Flooring Throughout
- Low Profile Evaporative Cooler
- \$3000 Spend in Street Appeal to upgrade your Facade



**Fairhaven
Homes**

annadale.com.au
Phone 9825 4474

Contact our Sales Team:
0467 999 962

DEVELOPED BY

MOREMAC
PROPERTY GROUP

WHILE BEST ENDEAVOURS HAVE BEEN USED TO PROVIDE INFORMATION IN THIS PUBLICATION THAT IS TRUE AND ACCURATE, ANNADALE, ITS CONSULTANTS, AGENTS AND RELATED ENTITIES ACCEPT NO RESPONSIBILITY AND DISCLAIM ALL LIABILITY IN RESPECT TO ANY ERRORS OR INACCURACIES IT MAY CONTAIN. PROSPECTIVE PURCHASERS SHOULD MAKE THEIR OWN ENQUIRIES TO VERIFY THE INFORMATION CONTAINED HEREIN.